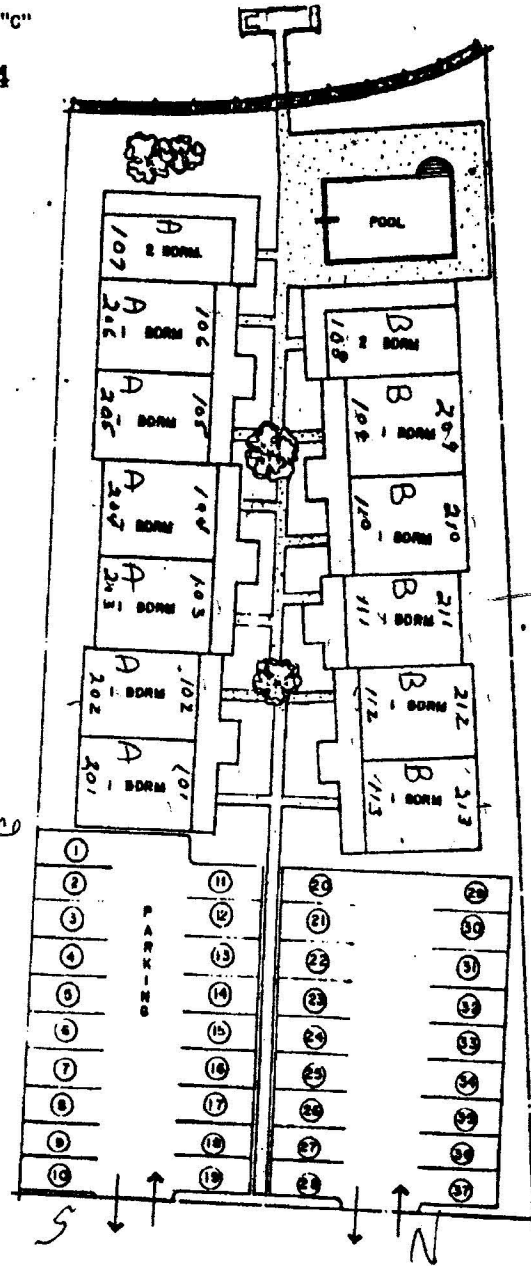


1 BR = 650 SQ. FT  
2 BR = 950 SQ. FT  
1 1/2 Bath

101 is  
office



**SITE PLAN**

STATE OF TEXAS }  
COUNTY OF NUECES }  
I hereby certify that this instrument was FILED on the  
date and at the time stamped herein by me, and was duly  
RECORDED, in the Volume and Page of the named RECORDS  
of Nueces County, Texas, as stamped herein by me, on

APR 28 1984

K.P.-4



*Marion Hollings*  
COUNTY CLERK  
NUECES COUNTY, TEXAS

371599

FILED FOR RECORD

APR 27 9 47 AM '84

*Marion Hollings*

COUNTY CLERK, NUECES COUNTY, TX

VER-6